

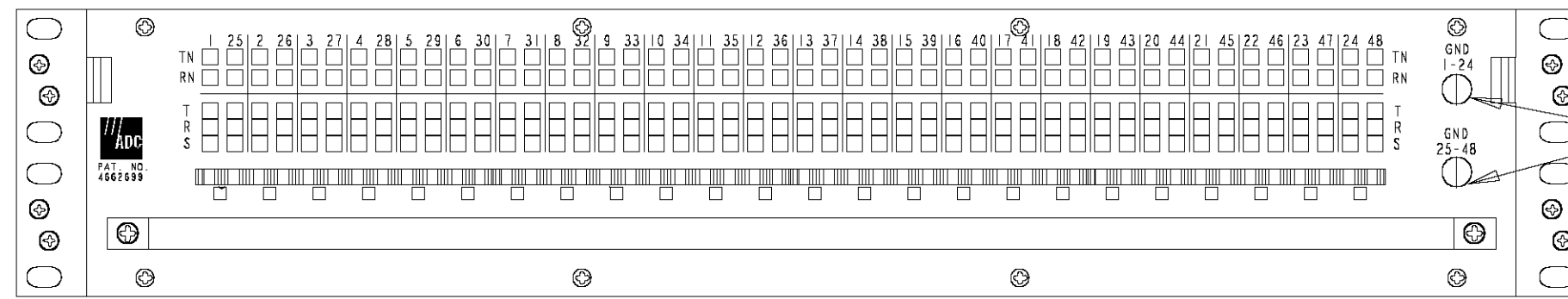
A

B

C

D

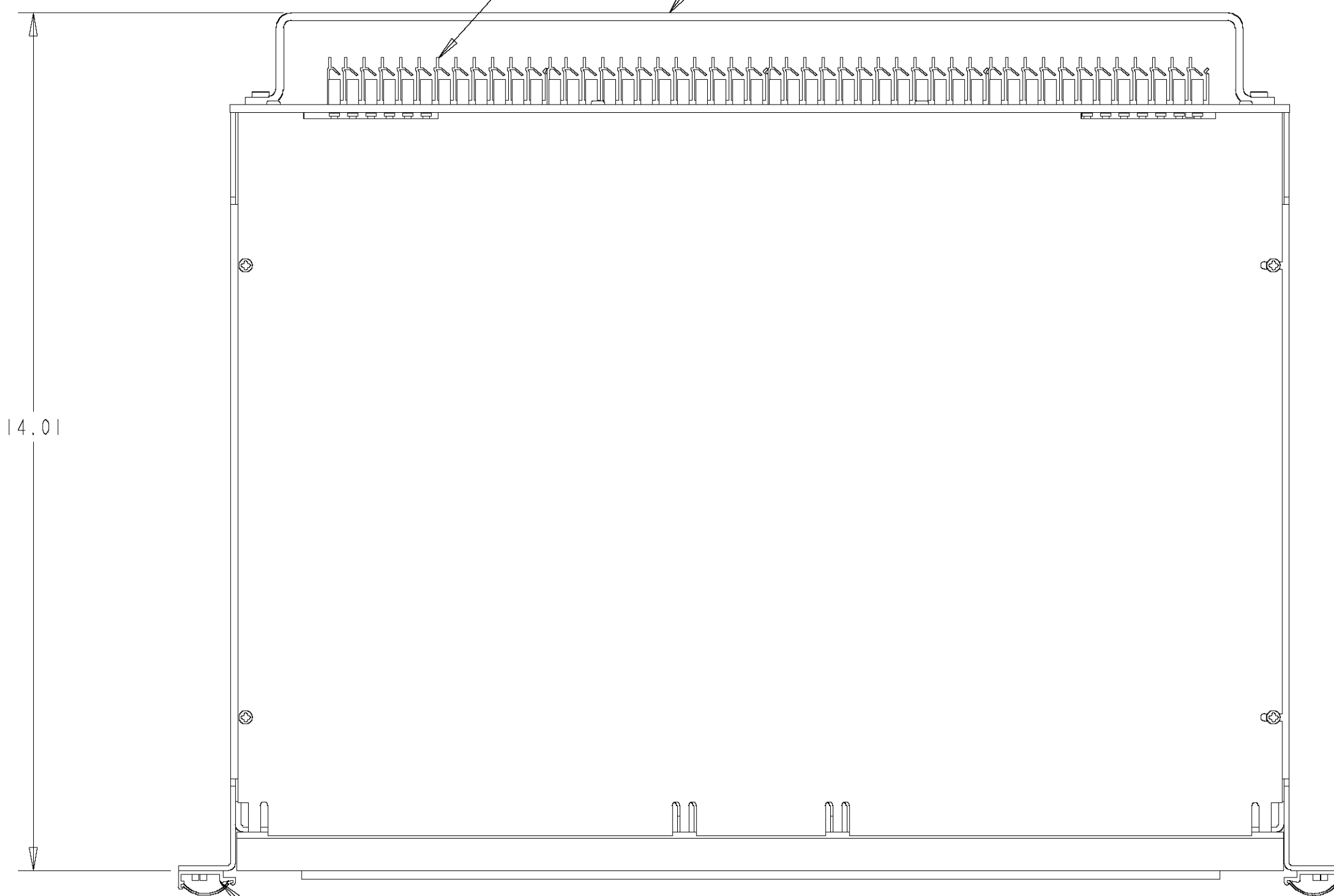
REAR VIEW ROTATED



MOUNTING HOLES FOR GROUND POSTS 4

FANNING STRIPS

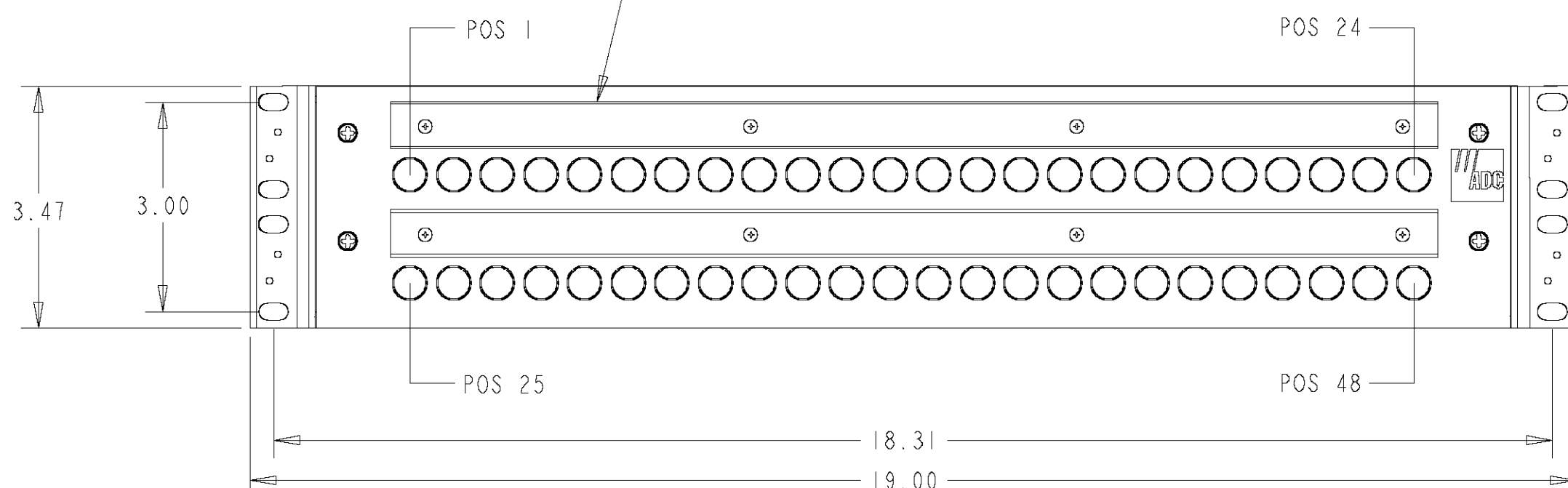
CABLE SUPPORT BAR



14.01

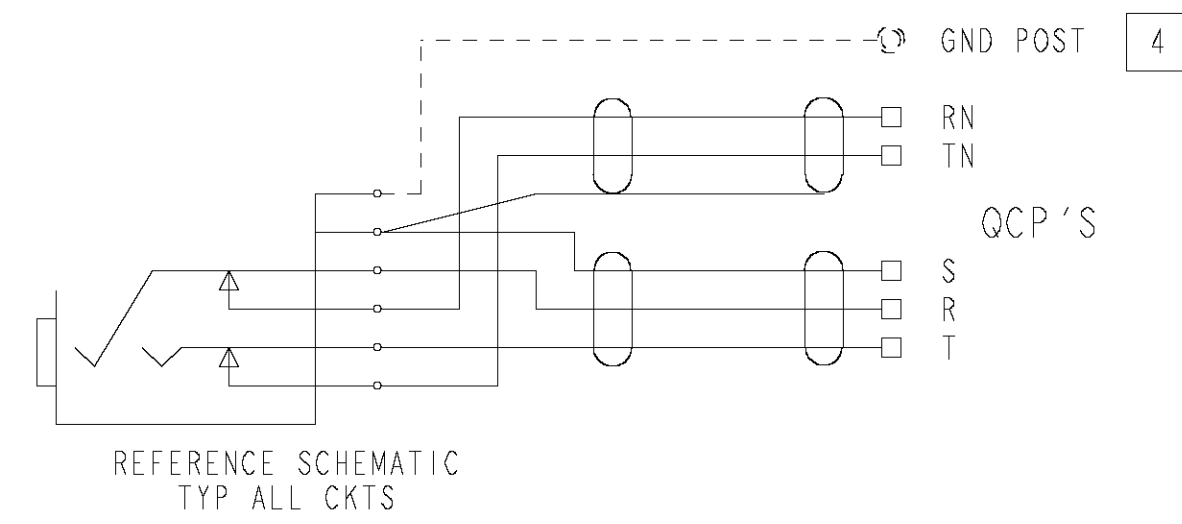
POSITION OF VERT DESIGNATION CARDS AND WINDOWS

POSITION OF HORZ DESIGNATION CARDS AND WINDOWS



NOTES:

- ONE COPY OF THIS DRAWING IS INCLUDED WITH UNIT.
- INCLUDED WITH UNIT IS DRAINWIRE SLEEVING, DESIGNATION CARDS, WINDOWS, GROUND POSTS, QCP REPAIR KIT, AND INSTRUCTION SHEETS.
- UNIT IS WIRED RED TO TIP, BLACK TO RING. UNIT CONTAINS A WIRING SERVICE LOOP TO ALLOW REMOVAL OF FRONT OR REAR PANELS 8".
- OPTIONAL COMMONING OF JACK SLEEVES IS POSSIBLE BY CONNECTING A WIRE TO THE SOLDER LUG ON EACH JACK AND CONNECTING IT TO A GROUND POST MOUNTED ON THE REAR PANEL. THIS IS A CUSTOMER OPTION AND NOT DONE BY ADC.



REFERENCE SCHEMATIC TYP ALL CKTS

CAT # PPA3-14MK11NO



INFORMATION ON THIS DOCUMENT IS PROPRIETARY TO ADC AND SHALL NOT BE USED, COPIED, REPRODUCED OR DISCLOSED IN WHOLE OR IN PART WITHOUT WRITTEN CONSENT OF ADC.

TOLERANCE UNLESS OTHERWISE SPECIFIED .XX: ±N/A .XXX: ±N/A ANGULAR: ±N/A

TITLE
PRO-PATCH
INSTALLATION DRAWING

DRAWING NUMBER
4-28010-0511

SIZE
C

ENGR: P. ADAMS
DWN: P. ADAMS

SHT. 1 OF 1

TELECOMMUNICATIONS DO NOT SCALE DRAWING

A

B

C

D